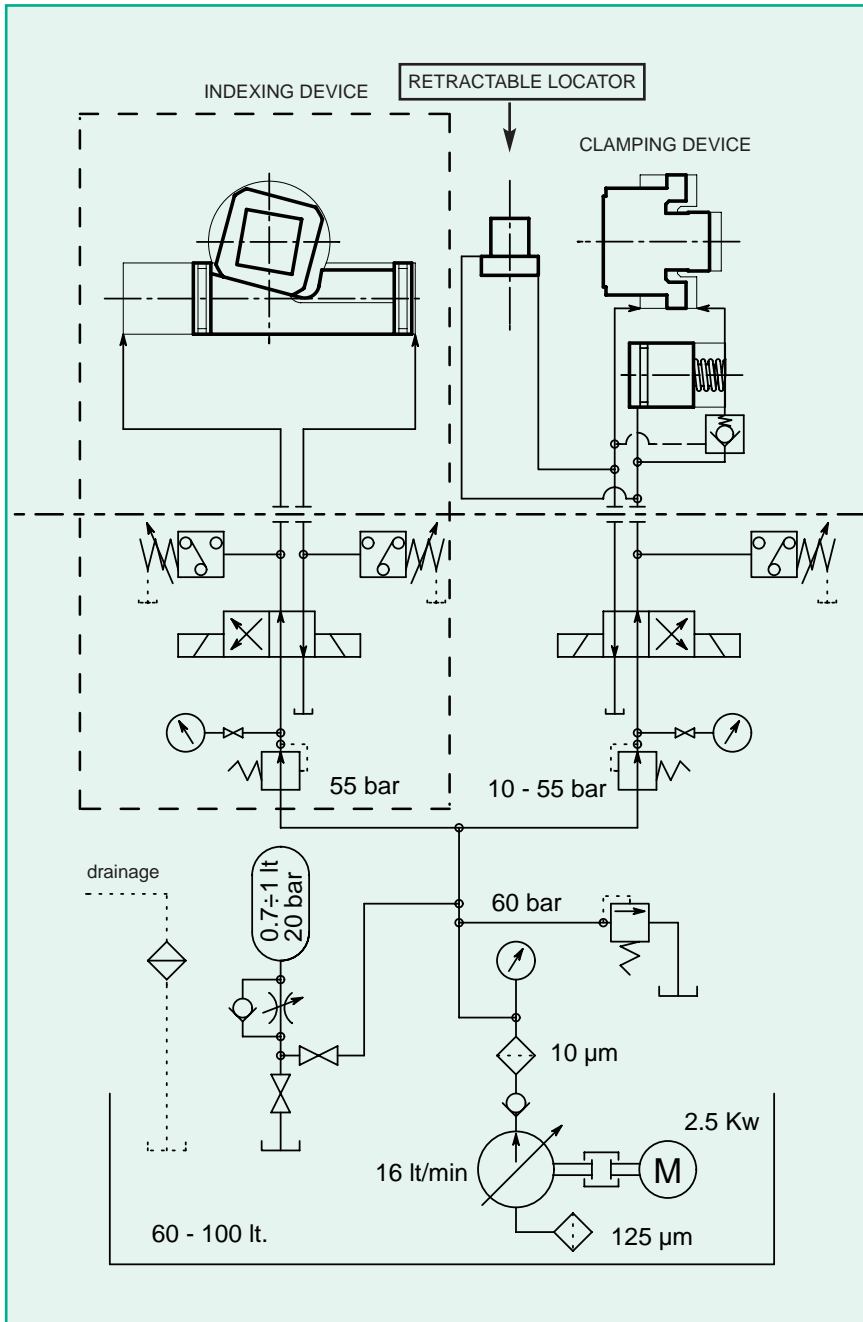


Diagram hydraulic system 4x90°



Sideways to power chuck MD hydraulic system.

--- = add to change the existing circuit.

Suggested hydraulic circuit specifications:

- tank with approx. 60 - 100 l capacity.
- system pressure minimum 60 bar.
- variable pump capacity of 16 lt/min.
- accumulator capacity 0.7 - 1.1 litres, pre-load with 20 bar
- double oil filtering.
- nr. 2 electro-valves systems with double solenoid with fixed positions.
- nr. 2 pressure reducing valves for indexing and clamping systems.
- nr. 3 pressure switch: (nr.1 for clamping, nr.2 for indexing circuit)

Optionals :

- hydraulic oil cooling system.
- double pressure clamping drive for parts susceptible to deformations (contact our technical staff for information to unlock the pilot operated non-return valve incorporated).

Note:

- The hydraulic oil manifold system of the chuck shall be ventilate.
- Hydraulic seat valves are very sensitive against contamination (recommended filtering BS5540/4 10 µm).
- OIL type HLP32 / DIN51524 - ISOVG32 / DIN51519 (32 cSt at 40°C).
- Only clean and recommended oil shall be used.
- Therefore an oil change every six months is recommended.